

WHAT YOU PAY FOR: WASTEWATER FEES

The Wastewater Treatment Plant

Our wastewater treatment plant serves about 500 parcels/homes in Bear Valley Springs. These are the homes connected to sewer lines rather than septic tanks.

Here's what happens to wastewater at the treatment plant



PRE-TREATMENT:

Physically removes large debris, such as cloth, plastic, and anything too large that may clog the system down the line.



BIOLOGICAL TREATMENT:

Bacteria are introduced into the wastewater. The bacteria eat organic matter, breaking it down and converting it into a form that's easier to remove.



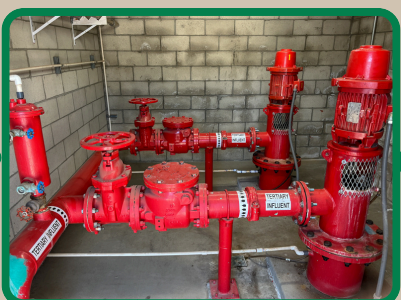
REMOVE SOLID PARTICLES:

The wastewater settles in a tank. As it does, solid particles separate and drop to the bottom as sludge and are removed, while the cleaner wastewater moves to a balancing tank



FLOW CONTROL:

The wastewater sits in balancing tank, which regulates the amount of water being sent to the next steps. Some chlorine is also added at this step to start disinfecting the water.



PREPARE FOR FILTRATION:

Pumps move the wastewater from the balancing tank to a sand filtration unit. Aluminum sulfate is added, causing smaller particles to stick together, so they're easier to remove.



SAND FILTRATION:

The wastewater is pumped up through sand. The sand catches and removes particles still present in the wastewater.



DISINFECTION:

The wastewater is injected with chlorine and flows through a contact chamber to maximize disinfection. The chlorine is added to eliminate pathogens and other harmful microorganisms.



DECHLORINATION:

The water sits in a pond, where it is injected with a dechlorination agent. This removes residual chlorine so it does not harm wildlife. The treated water is non-potable, but it can be safely released into the environment.

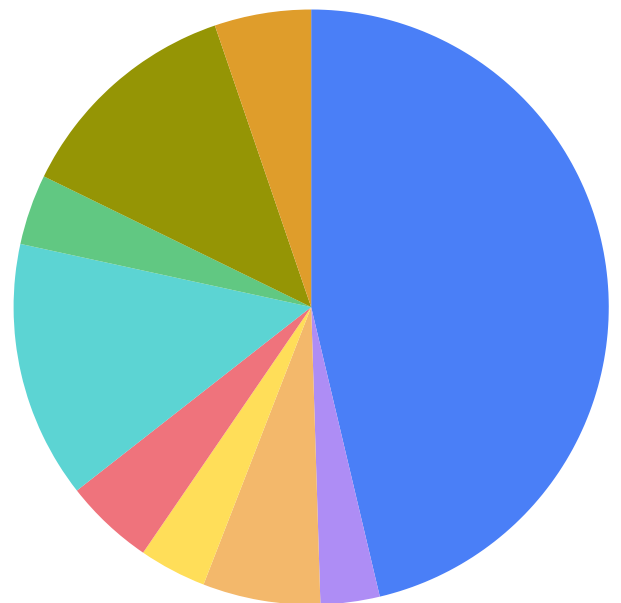
The wastewater treatment plant is tightly monitored to prevent the release of potentially hazardous water, which could lead to environmental damage or groundwater contamination.

Failures can also lead to significant fines from state or county governments.

Our WWTP team is constantly running chemical analyses and maintenance checks to ensure everything is working normally.

2026/2027 Planned Spending:
Wastewater Department
Total Budget: \$1.07 Million

- Salaries and Benefits - \$493,000
- Equipment and Facilities - \$34,000
- Chemicals and Lab Analysis - \$68,000
- State and County Fees - \$39,000
- Other operations costs - \$52,000
- Administrative Support - \$149,000
- Utilities - \$41,000
- Fleet and Facility Maintenance - \$133,000
- Insurance - \$56,000



Wastewater Staff

- 1 Wastewater Supervisor
- 2 Wastewater Operators
- .5 Maintenance Technician



Wastewater staff continuously test wastewater to confirm:

- Beneficial bacteria are thriving
- Proper amounts of chemicals are being added at the right times
- Potentially harmful particles and microorganisms have been removed
- Dechlorination is complete before reuse or discharge